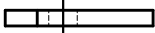
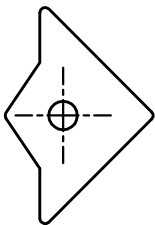
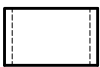
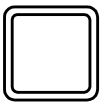
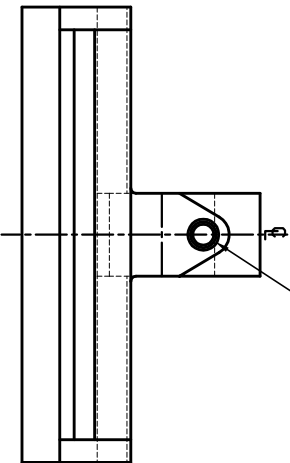
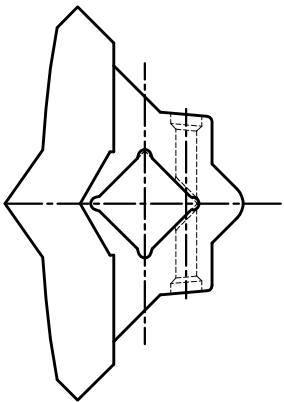


UT-TIP

ROLL PIN

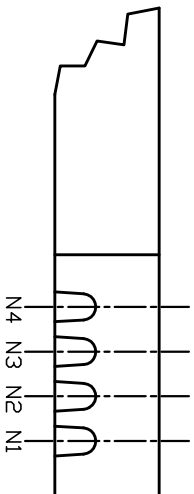
SPACER

END CAP



DIRECTIONS:

1. INSTALL UT-TIP ON NOTCH AS NORMAL.
2. SLIDE SPACER OVER END OF SHANK.
VERIFY THAT AFTER INSTALLING THE TIP, THE SPACER STICKS OUT PAST THE END OF THE SHANK APPROXIMATELY 1/8"-1/4".
3. ALIGN END CAP WITH TAPPED HOLE IN THE SHANK AND INSTALL HEX BOLT.



TOLERANCE .00 +/- .06
.000 +/- .005
UNLESS SPECIFIED OTHERWISE.

INDEX	QTY.	DIMENSION	DESCRIPTION
			DD NOT SCALE THIS DRAWING
			END CAP INSTALL
			SHANK CAP INSTALLATION
			KENCOD ENGINEERING

DRAFTSMAN DATE

GJA 1/24/01
APPROVED DATE

REFERENCE:



KENCOD ENGINEERING

P.O. BOX 1467
RUSSELLVILLE, CALIF. 95747
PHONE (800) 423-4518 FAX (916) 783-3494

ALL RIGHTS TO THIS DRAWING OR ANY PART THEREOF,
ARE RESERVED TO KENCOD ENGINEERING INC.

SHANK CAP INSTALLATION

KENCOD ENGINEERING

- OF - SHANKCAP INSTALL