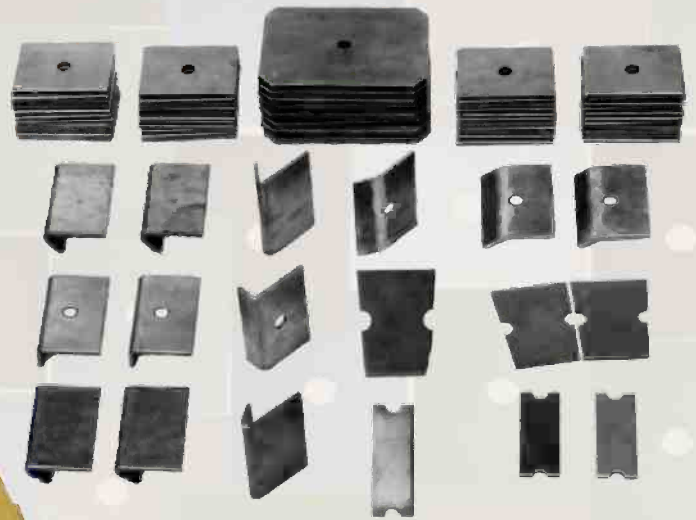


Kenco Wear Patch eliminates hardfacing
and offers 5 to 10 times

longer wearlife



Benefits

- Lasts up to 10 times longer than hardfacing
- Installs over 10 times faster than conventional hardfacing
- Much less welding - eliminates heat distortion
- Reduces hardfacing cost- cuts downtime
- Plug or tack welds in place with Mig or common low hydrogen electrodes
- Hardness in excess of 60 Rockwell "C" or 600 Brinell
- Multiple sizes and shapes provide unlimited applications on all types of equipment
- Can be cut with torch to fit irregular areas

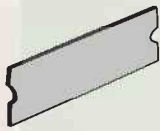


Sizes & Applications

GREAT FOR HIGH WEAR AND LOW TO MEDIUM IMPACT



WP-340
3/16" x 3" x 4"



WP-154
3/16" x 1 1/2" x 4"



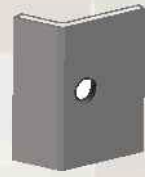
WP-342
3/16" x 2 1/2" x 4" x 3"



WP-257
45° x 3/16" x 4"



WP-258
90° x 3/16" x 4"



WP-259
150° x 3/16" x 1" x 2" x 4"

Applications:

Loaders, Backhoes, Excavators, Scrapers, Drag Lines, Paving Machines, Deflector Plates, Mixing Paddles, Flop Gates, Flat Sides, Vertical Edges and many more.

WP-154

This width can be fitted to smaller areas and contour surfaces like slats, troughs, etc.

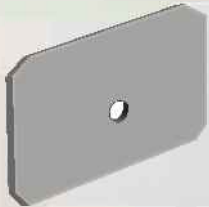
WP-342

Unique size for Ready Mix Charging Chutes, Cones, Hoppers, Trapezoidal Chutes, etc.

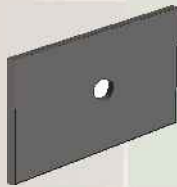
WP-259

Protect 150° Moldboards on Loaders, Shovels, Drag Lines, etc.

GREAT FOR HIGH WEAR AND MODERATE TO HIGH IMPACT

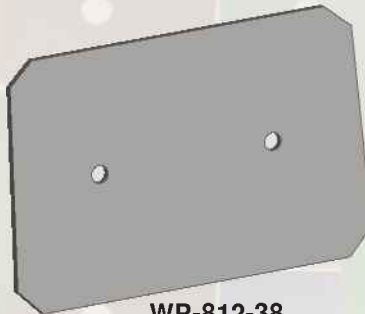


WP-450
1/4" x 4" x 5"

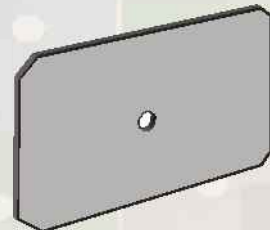


WP-450-38
3/8" x 4" x 5"

WP-340-38
3/8" x 3" x 4"



WP-812-38
3/8" x 8" x 12"



WP-570
1/4" x 5" x 7"

WP-570-38
3/8" x 5" x 7"

Applications:

Many of the same as above where impact is an added condition. Excavators, Loader buckets, Dozer Blades and Sidearms, Chutes, Drag Lines, Shovels, Truck Beds, Profilers and Stabilizers, etc.

WHAT WILL YOUR WEAR PATCH PROTECT?

Kenco Wear Patch was designed by hardfacing specialists to eliminate common hardfacing problems: high cost of applying, material dilution, warping from heat distortion, and the time required to cover wear areas. Kenco Wear Patch addresses all of these problems AND provides a wear surface in excess of 60 Rockwell "C." Our most popular sizes are only 3/16" or 1/4" thick thus adding minimal weight.

Kenco Wear Patch is available in various sizes and configurations as shown above. Kenco Wear Patch can be flame or plasma cut to fit special sizes or applications. Selected sizes are available for high wear AND moderate impact. Kenco Wear Patch is easy to install with tack or plug welds and can be applied with either Mig or common low hydrogen electrodes. The result is better protection that can be installed 10 times faster than hardfacing.

Distributed by:



Kenco Engineering, Inc.

P.O. Box 1467

Roseville, CA 95678

800-363-9859

www.kencoengineering.com