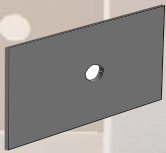


KENCO BULLETPROOF WEAR PATCH

reduces hardfacing labor and material costs to keep your equipment working



WP-340

3/16" x 3" x 4"



WP-154

3/16" x 1 1/2" x 4"



WP-342

3/16" x 2 1/2" x 4" x 3"



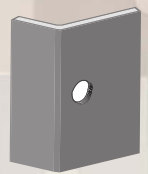
WP-257

45° x 3/16" x 4"



WP-258

90° x 3/16" x 4"



WP-259

30° x 3/16" x 1" x 2" x 4"

GREAT FOR HIGH WEAR ABRASIVE SLIDING AND LOW IMPACT

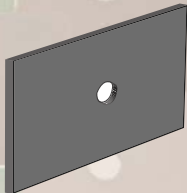
Applications:

Loaders, Backhoes, Excavators, and Elevator Buckets; Scrapers, Drag Lines, Paving Machines, Pugmills, Dryer Flights, Discharge Flights, Deflector Plates, Landing Zones, Mixing Paddles, Guides, Conveyor Troughs, Baffles, Wear Slats, Flat Sides, Vertical Edges, and many more.

WP-154 This width can be fitted to smaller areas and contour surfaces like slats, troughs, etc.

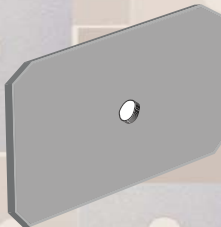
WP-342 Unique size for Ready Mix Charging Chutes, Cones, Hoppers, Trapezoidal Chutes, etc

WP-259 Protect 30° Mold or Baseboards on Loaders, Shovels, Drag Lines, Mowers, Cultivators, etc.



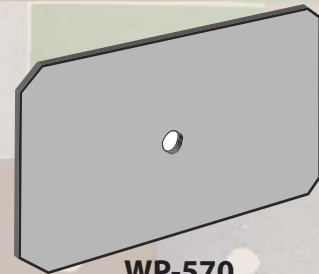
WP-340-38

3/8" x 3" x 4"



WP-450

1/4" x 4" x 5"



WP-570

1/4" x 5" x 7"

GREAT FOR HIGH WEAR ABRASIVE SLIDING AND MODERATE IMPACT

Applications:

Many of the same as above where impact is an added condition. Loader Buckets, Dozers, Sidearms, Chutes, Drag Lines, Shovels, Truck Beds, Log Forks, Excavators, etc.

BENEFITS

- ◇ Protects any surface subject to high abrasive wear.
- ◇ Can be applied up to 14 times faster than conventional hardfacing.
- ◇ Lasts up to 10 times longer than hardfacing.
- ◇ Fits any contour (flat, concave, convex).
- ◇ Much less welding - eliminates heat distortion
- ◇ Welds in place with Mig or common electrodes.
- ◇ Easy to install by plug or tack welding.
- ◇ Reduces hardfacing costs - cuts downtime.
- ◇ Can be cut with torch to fit irregular shapes.
- ◇ Hardness in excess of 60 Rockwell "C" or 600 Brinell.
- ◇ Immediate delivery from stock.

KENCO ENGINEERING, INC

WWW.KENCOENGINEERING.COM

P.O. BOX 1467 ROSEVILLE, CA 95678 (800) 363-9859