



# Kenco Engineering, Inc.

Wear Parts for Milling Machines and Reclaimers

## Tungsten Carbide Impregnation



With Kenco's unique Tungsten Carbide Impregnation, (TCI) process:

- TC is embedded to a depth of 1/4" in the parent metal
- No filler rod or wire used
- This is true impregnation, not an overlay process!



## Cutter Box Protection



- Kenco TCI wear plates provide the longest wearlife available-- up to 10X longer than AR plate
- Easily welded in place with common welding wire or electrodes
- Customizable to almost any size and/or shape to protect high wear areas
- Indicates Kenco TCI wear plate ● Segmented TCI end plates available for end wall repair

## TCI Cutting Edges



- Kenco TCI cutting edges provide long wearlife and simple maintenance
- Kenco's blade wears into the machine's cutter pattern, reducing clean-up requirements (see detail)
- Kenco TCI cutting edges can be repaired if damaged-- no need to throw away valuable material due to fractured or lost TC inserts (see website for details)
- Available as a segmented or one piece design-- custom designs available
- TC can be added to protect the vertical edge (see detail on left)



## Drum Wear Protection



- Kenco TCI Discharge Paddles provide long wearlife-- (photos after 2 full seasons!)
- TCI Discharge Paddles available in bolt-on or weld-on styles-- you choose!
- Kenco TCI Cleaner Bars prevent build-up between drum and end plate
- Can be customized to fit any application
- Kenco TCI Tooth Holder Protectors prolong life of expensive tooth holders

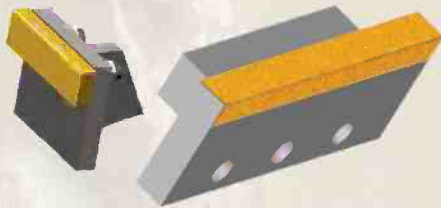


Front View

Discharge Paddles



Back View



TCI Discharge Paddles



Tooth Holder Protector



Cleaner Bar

## Skis and Skids



- Available as bolt-on replacement skis or weld-on skids
- TCI skids are easily welded to existing skirt walls
- Available in TCI for maximum wearlife or CCHF overlay to protect asphalt surface
- Custom shapes and sizes available
- Apply protection where & when you need it



## Wear Patch

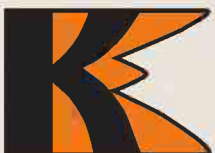
**Forget about hardfacing. When compared to Kenco's 60-63 Rockwell C tested Wear Patch, there's no contest!**



- Available in a variety of flat and formed shapes that can be installed almost anywhere
- Can be applied up to 10 times faster than conventional hardfacing
- Outlasts conventional hardfacing by as much as 10 times



Distributed by:



Kenco Engineering, Inc.  
 P.O. Box 1467  
 Roseville, CA 95678  
 800-363-9859  
 www.kencoengineering.com